

AC Harmonic Filter Capacitor C73



Characteristics

- Aluminum square case package, perfused with epoxy resin
- Lead by tinned copper nut or copper screw, located plastic cover, easy installation
- High withstand voltage, self-healing
- High ripple current, high dv/dt withstand capability
- Large capacitance, small size

Application

- Widely used in power electronic equipment used for the AC filter.
- Acting as AC filter, harmonic control and power factor Improvement in high power UPS, switching power Supply, frequency converter and other equipment

Technical Data

• Reference Standards	GB/T 17702 IEC 61071
• Operating Temperature Range	-40°C~+55°C Tmax+85°C (the highest temp.+85°C)
• Capacitance Range	3×40µF~3×500µF
• Rated Voltage	400VAC/50Hz~1140VAC/50Hz
• Capacity Tolerance	±5%(J); ±10%(K)
• Test Voltage Between Electrodes	2.15UN (AC) 10S 20°C
• Test Voltage Between Electrode And Case	1000+2×UN (VAC) 50Hz 60S (min 3000VAC)
• Dissipation Factor	tgδ≤2×10 ⁻³ at 20°C, 100Hz
• Insulation Resistance	C·R≥10000S, at 100VDC, 20°C, 60S
• Maximum Altitude	2000m
	For altitudes between 2000m and 5000m, consideration should be given to the use of deductions (10% reduction in voltage and current per 1000m increase)
• Life Expectancy	100000hrs (Un θhotspot ≤ 55°C)

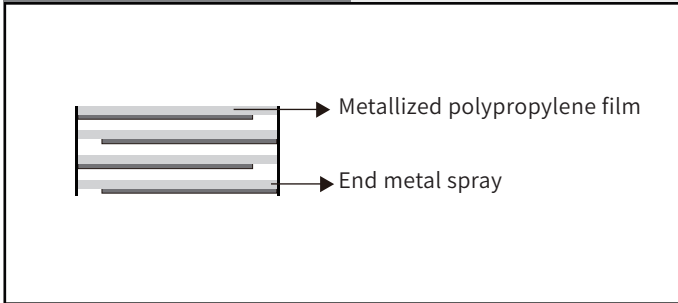
Overvoltage Operation

1.1×UN	30% of on-load-dur.
1.15×UN	30 min/day
1.2×UN	5 min/day
1.3×UN	1min/day
1.5×UN	100ms each time, no more than 1000 times during the lifetime

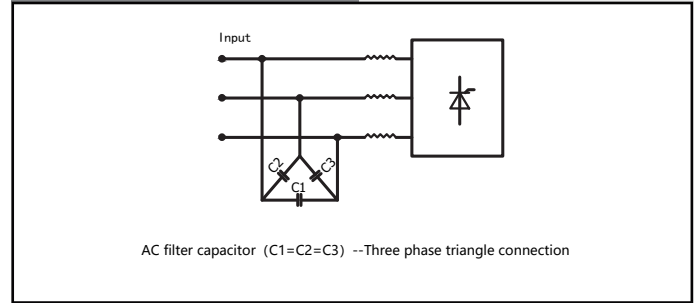
C73

AC Harmonic Filter Capacitor

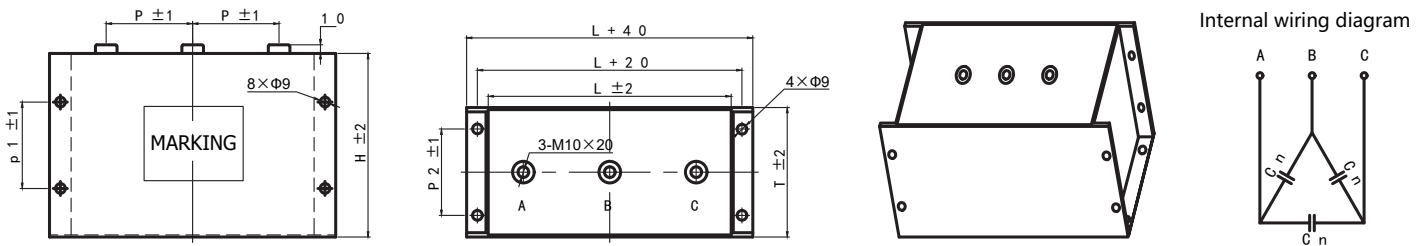
Construction Diagram



Typical Circuit

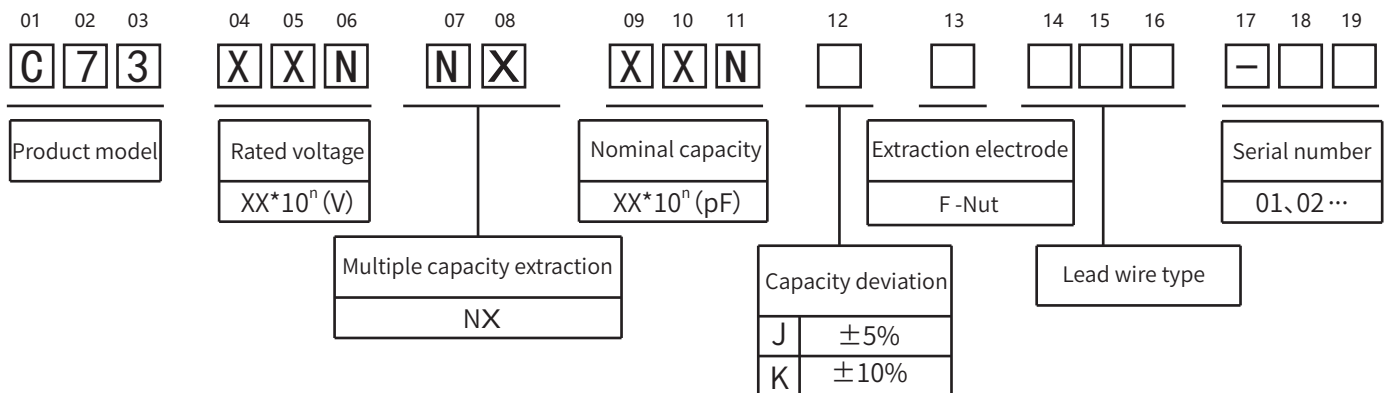


Product Shape



C73 series AC three phase filter capacitor

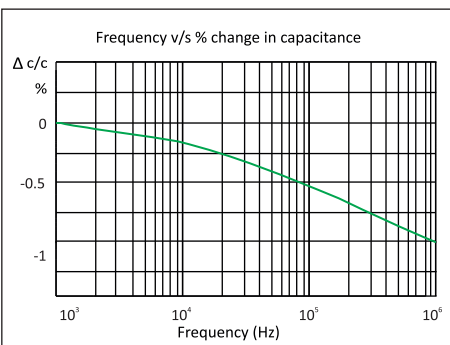
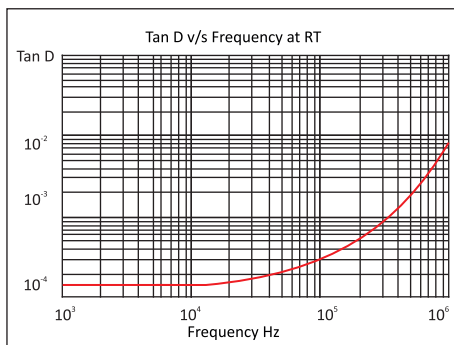
Product Coding



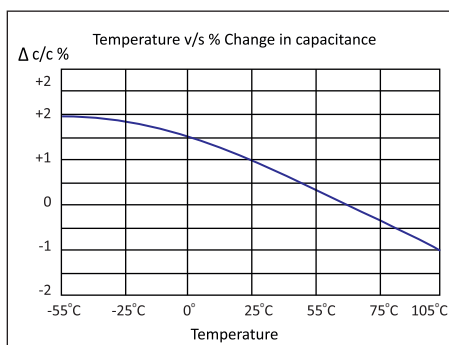
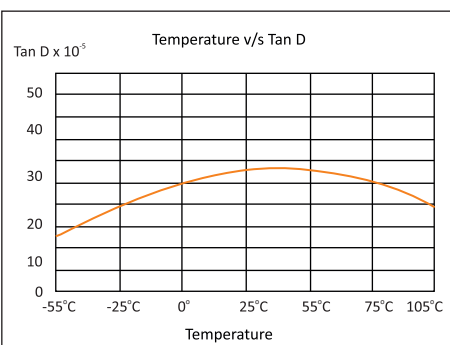
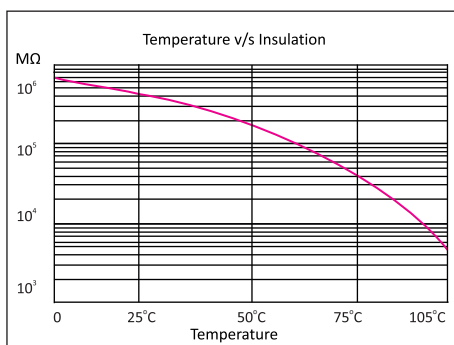
C73

AC Harmonic Filter Capacitor

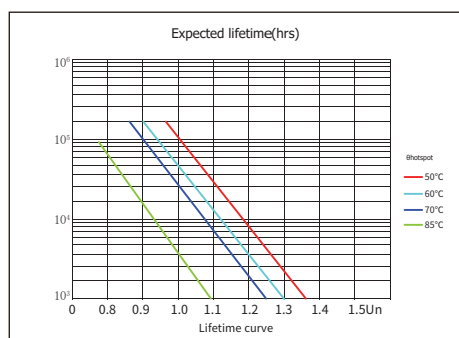
Temperature Characteristics



Frequency Characteristics



Life Expectancy



Part Number	CAP μF	Dimension (mm)			dV/dt (V/μS)	I _p (KA)	I _s (KA)	I _{rms} @ 50°C (A)	R _{th} (K/W)	ESL (nH)	ESR @1KHz (mΩ)
		D	H	H							
U _N = 400VAC/50Hz											
C724013×207J●●●●●●	3×200	225	120	170	50	10.0	30.0	3×70	1.1	≤100	3×0.95
C724013×307J●●●●●●	3×300	225	120	235	40	12.0	36.0	3×90	0.8	≤100	3×0.85
C724013×407J●●●●●●	3×400	295	120	235	35	14.0	42.0	3×120	0.7	≤100	3×0.80
C724013×507J●●●●●●	3×500	365	120	235	30	15.0	45.0	3×160	0.6	≤100	3×0.78
U _N = 500VAC/50Hz											
C725013×127J●●●●●●	3×120	225	120	170	60	7.2	21.6	3×50	1.1	≤100	3×1.2
C725013×187J●●●●●●	3×180	225	120	235	50	9.0	27.0	3×70	0.8	≤100	3×1.05
C725013×247J●●●●●●	3×247	295	120	235	45	10.8	32.4	3×100	0.7	≤100	3×1.0
C725013×307J●●●●●●	3×307	365	120	235	40	12.0	36.0	3×120	0.6	≤100	3×0.9
U _N = 690VAC/50Hz											
C726913×506J●●●●●●	3×50	225	120	170	100	5.0	15.0	3×50	1.1	≤100	3×2.3
C726913×756J●●●●●●	3×75	225	120	235	90	6.8	20.4	3×70	0.8	≤100	3×2.1
C726913×107J●●●●●●	3×100	295	120	235	80	8.0	24.0	3×100	0.7	≤100	3×1.6
C726913×127J●●●●●●	3×125	365	120	235	80	10.0	30.0	3×120	0.6	≤100	3×1.3
U _N = 1140VAC/50Hz											
C721123×426J●●●●●●	3×42	340	175	200	120	5.0	15.0	3×80	0.6	≤100	3×3.3
C721123×606J●●●●●●	3×60	420	175	250	100	6.0	18.0	3×100	0.5	≤100	3×2.8

The above table / graphics are for reference only, subject to the actual product (unit: mm)